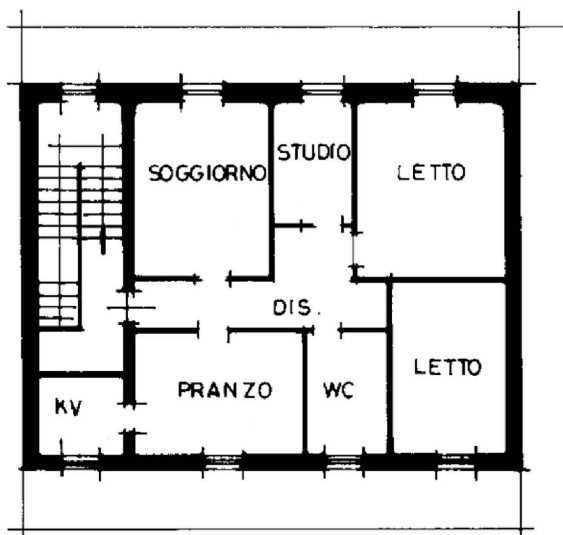


**PIANO TERRA**

H= mt. 2.70

Superficie Lorda PT = 110,90 mq

Sup. Commerciale = 111mq



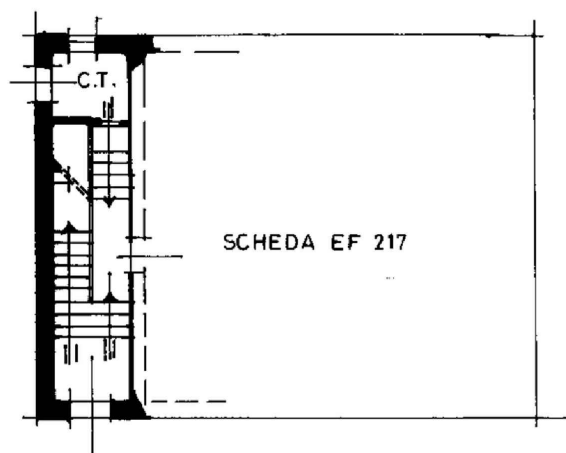
**PIANO PRIMO**

H= 2.70 mt.

Superficie Lorda P01:

- Alloggio = 114,65 mq
- Balconi = 40,05 mq

Sup. Commerciale = 127mq



**PIANO TERRA**

H= 270

Scala 1:200

COMUNE DI CASTEGGIO

VIA VIGORELLI

**GIULIA GARBI**  
agenzia immobiliare