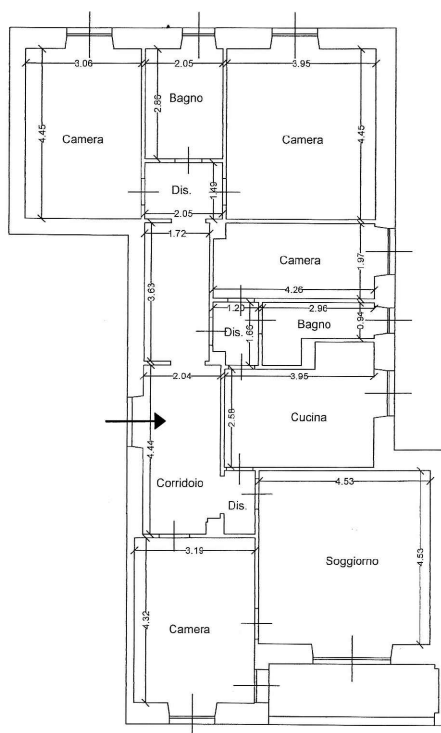
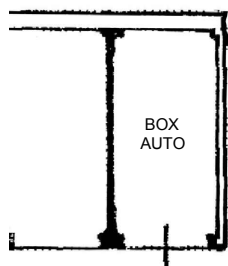


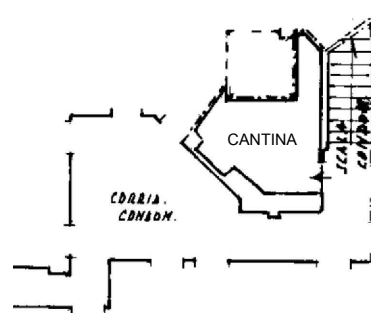
PIANO TERRA
H = 2.95m



PIANO TERRA
(Autorimessa)



PIANO SEMINTERRATO
H = 2.10m



Superficie Lorda:

- Alloggio = 147,65 mq
- Loggia = 7,45 mq

Sup. Commerciale Alloggio = 150 mq

Scala 1:200

COMUNE DI ALASSIO

VIA ROMA

GIULIA  GARBI
agenzia immobiliare