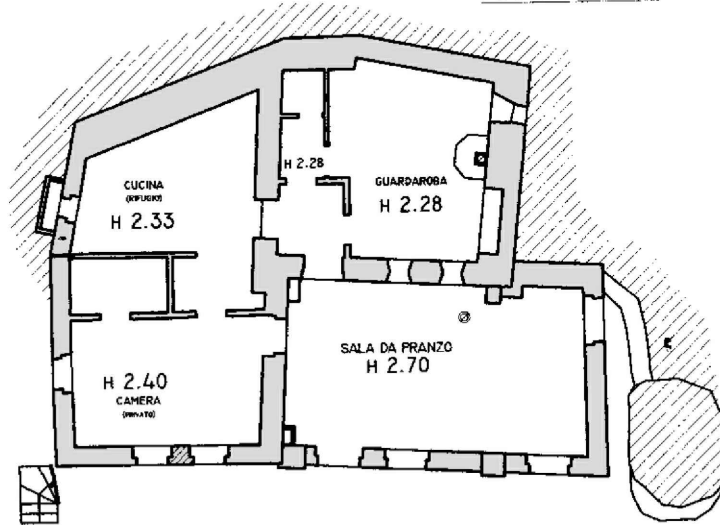
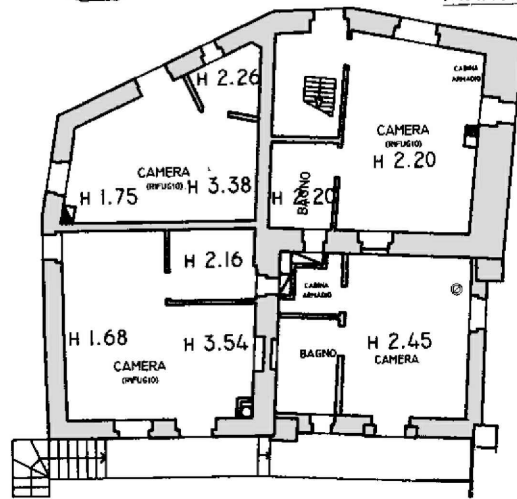


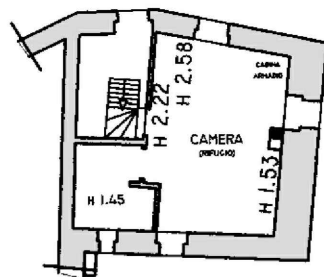
PIANO TERRENO



PIANO PRIMO



PIANO SECONDO



Superficie Lorda:

- Piano Terra = 143,30 mq
- Piano Primo = 125,05 mq
- Piano Secondo = 42,05 mq

Sup. Commerciale = 310 mq

Scala 1:200

COMUNE DI ACCEGLIO

BORGO VIVIERE

GIULIA GARBI  
agenzia immobiliare