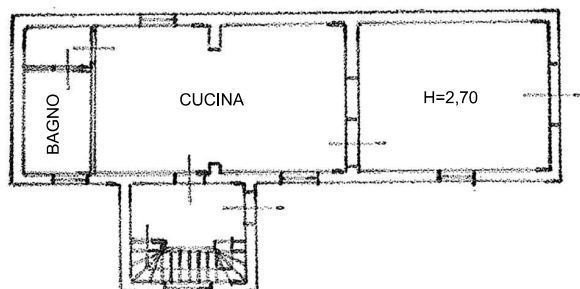
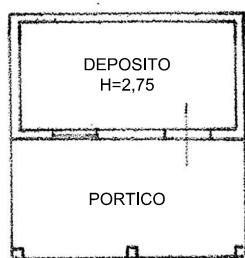
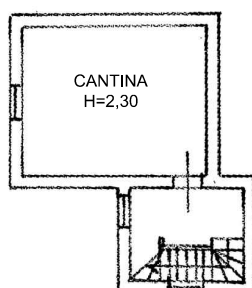


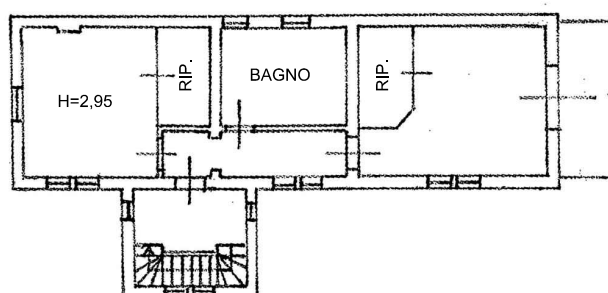
PIANO TERRA



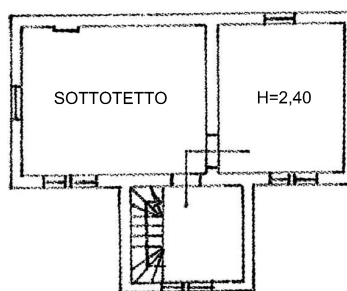
PIANO INTERRATO



PIANO PRIMO



PIANO SECONDO



Superficie Lorda Villa:

- Piano Terra = 75,65 mq
- Piano Primo = 75,65 mq
- Balcone (P1) = 6,10 mq
- Sottotetto (P2) = 51,60 mq

Sup. Lorda Deposito (PT) = 40,58 mq

Sup. Lorda Cantina = 35,76 mq

Sup. Lorda Giardino = 2963,50 mq

Superficie Commerciale Villa = 163,61 mq

Superficie Commerciale Giardino = 71,37 mq

Scala 1:200

COMUNE DI CASTEGGIO

VIA MOMBRIONE

GIULIA  GARBI
agenzia immobiliare