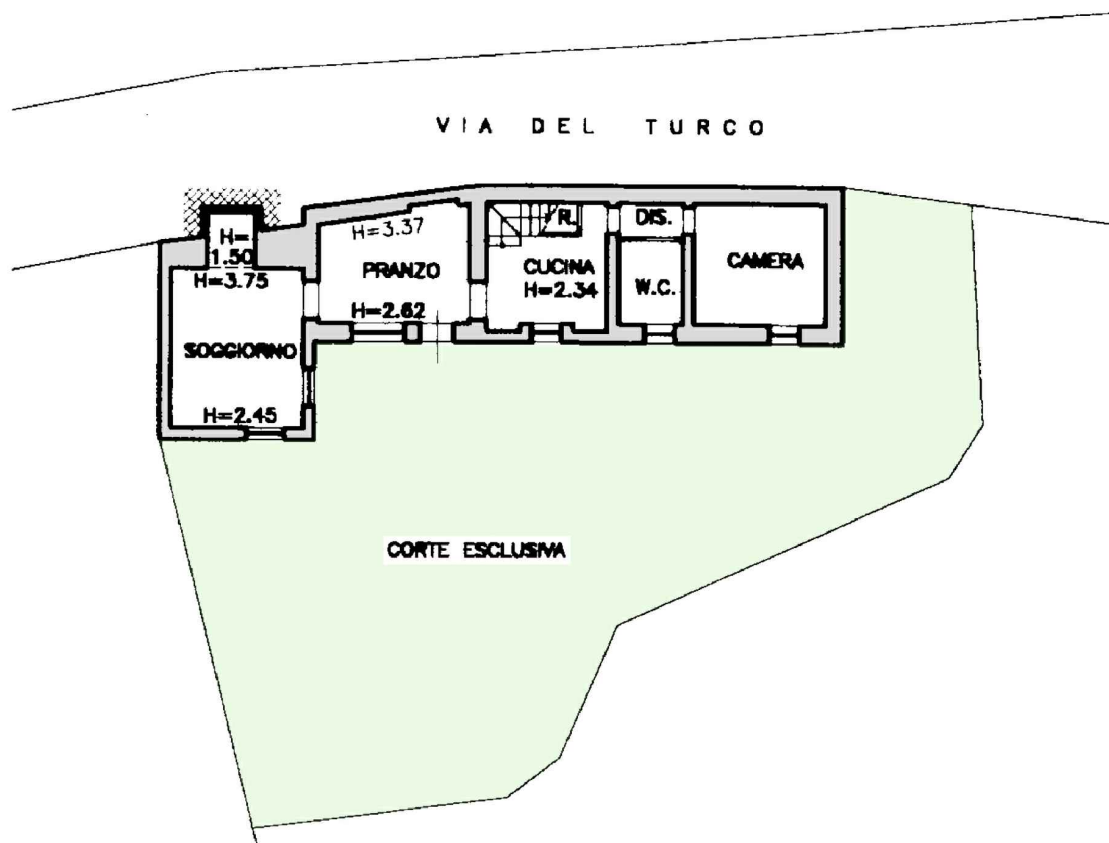
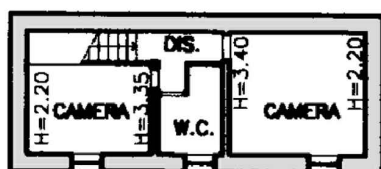


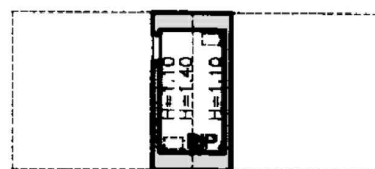
PIANO TERRA



PIANO PRIMO



PIANO SECONDO / SOTTOTETTO



Superficie Lorda:

- Piano Terra = 79,50 mq
- Piano Primo = 40,90 mq
- Sottotetto (P2) = 8,65 mq
- Corte esclusiva = 185,00 mq

Sup. Commerciale Alloggio = 125 mq

Scala 1:200

COMUNE DI GABICCE MONTE

VIA DEL TURCO

GIULIA  GARBI
agenzia immobiliare