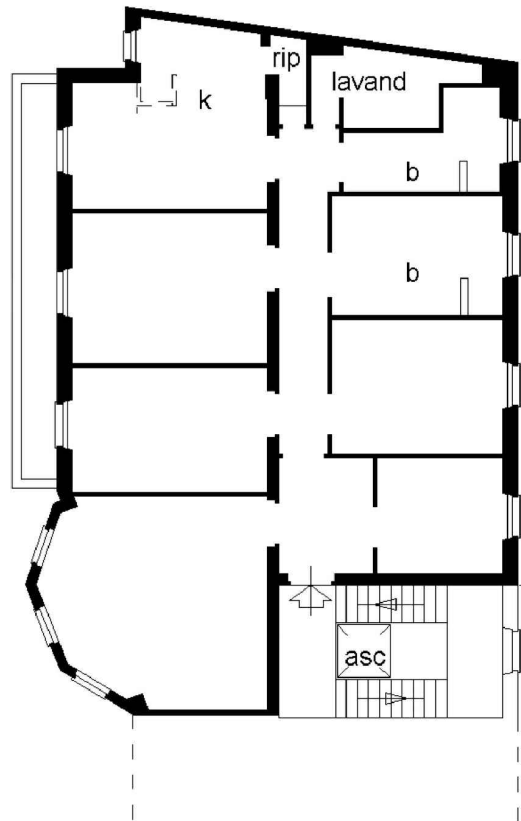


int. 3

abitazione piano terra

h = 330 circa

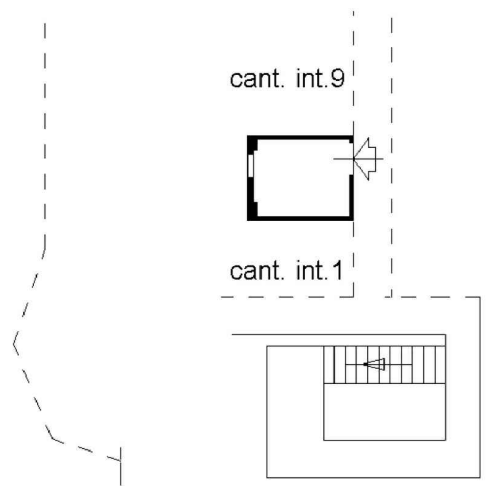
litorale
demaniale



via B. Zaccaria

cantina piano S2

h = 220 circa



via B. Zaccaria

Superficie Lorda:

- Alloggio = 196,50 mq
- Balcone = 13,05 mq

Superficie Commerciale = 200,30 mq

Scala 1:200

COMUNE DI GENOVA - PEGLI/VOLTRI

VIA ZACCARIA

GIULIA GARBI
agenzia immobiliare