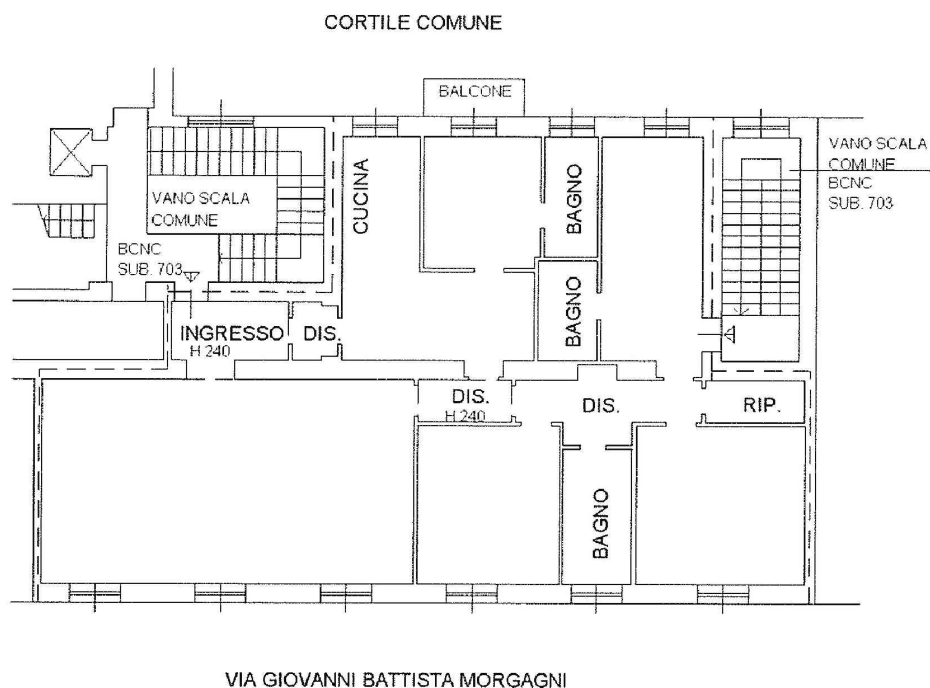


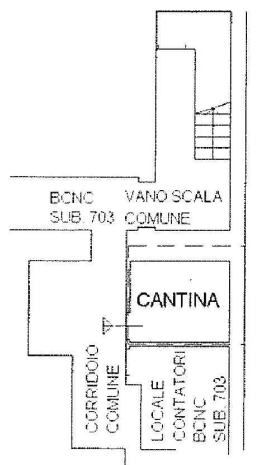
## PIANO QUARTO

h 3,00 m



## PIANO PRIMO INTERRATO

h 2,80 m



Superficie Lorda:

- Alloggio = 202,30 mq
- Balcone = 2,60 mq
- Cantina = 8,10 mq

Sup. Commerciale TOT = 205 mq

Scala 1:200

COMUNE DI MILANO

VIA MORGAGNI

GIULIA  GARBI  
agenzia immobiliare