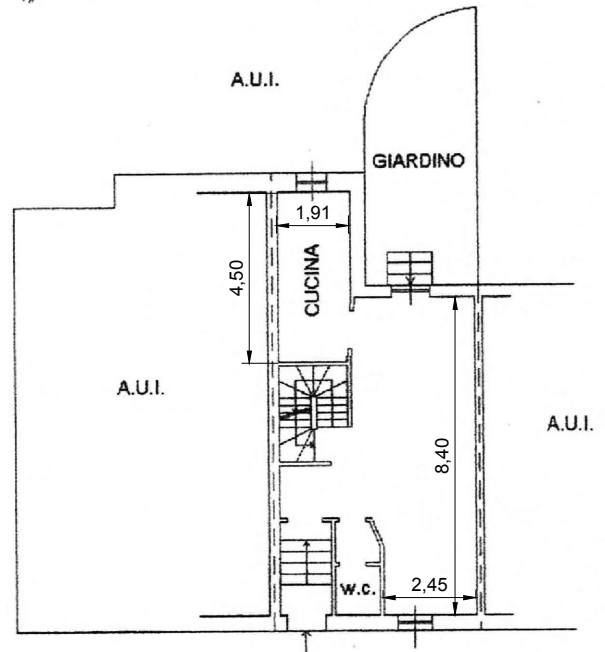


VIA VERRAZZANO

PIANO PRIMO SOTTOSTRADA

H= 3.00 m

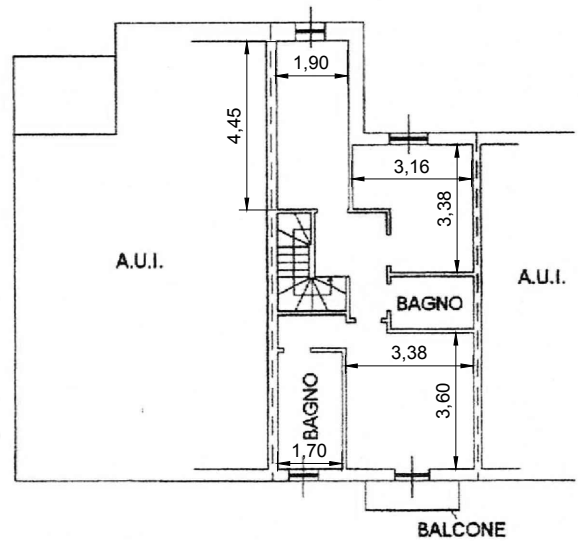


VIA VERRAZZANO

PIANO TERRA

H= 3.50 m

NB
QUOTE RICAVATE DALLA PLANIMETRIA CATASTALE



VIA VERRAZZANO

PIANO PRIMO

H= 3.60 m

Superficie Lorda:

- Piano int. (P-1) = 55,85 mq
- Piano Terra = 57,05 mq
- Giardino (PT) = 19,75 mq
- Piano Primo = 57,05 mq
- Balcone (P1) = 1,90 mq

Sup. Commerciale = 139 mq

Scala 1:200

COMUNE DI MILANO

VIA VERRAZZANO

GIULIA GARBI
agenzia immobiliare