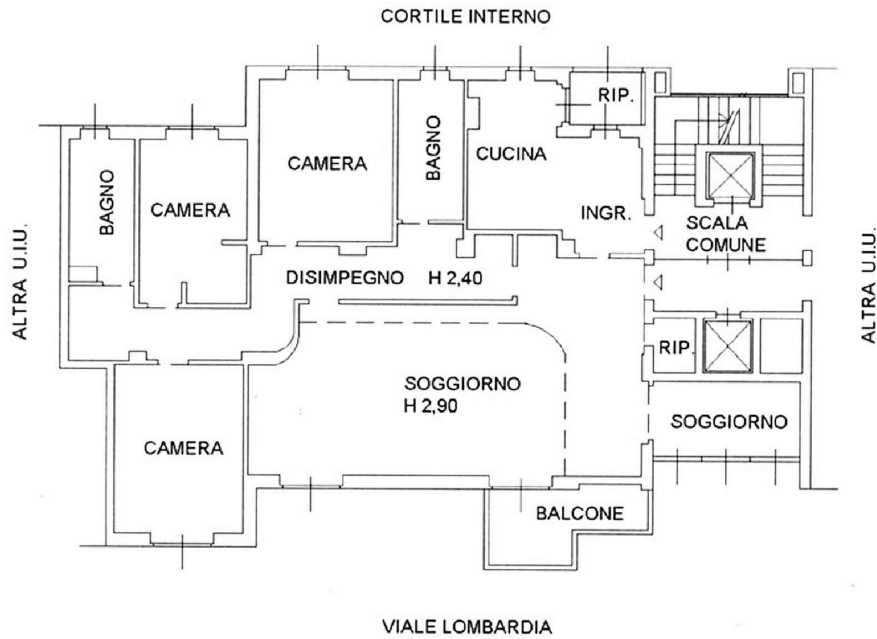
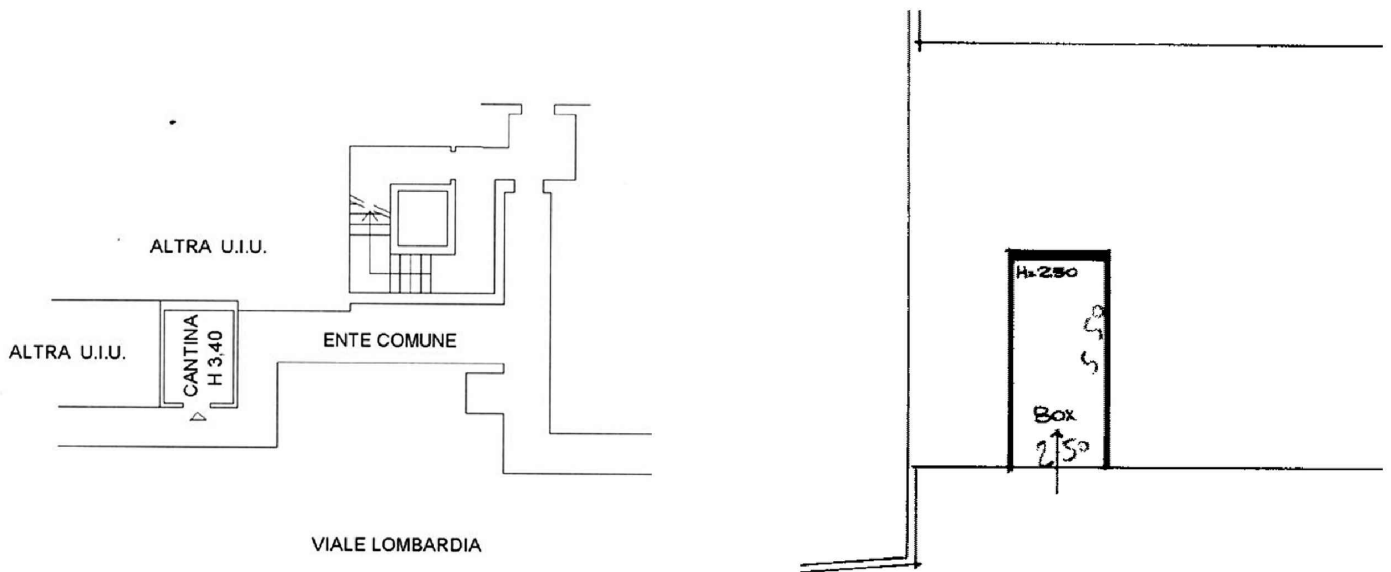


PIANO SECONDO



PIANO PRIMO SOTTOSTRADA



Superficie Lorda:

- Alloggio = 180,60 mq
- Balcone = 7,95 mq
- Cantina = 5,70 mq
- Box auto = 15,30 mq

Sup. Commerciale = 184 mq

Scala 1:200

COMUNE DI MILANO

VIALE LOMBARDIA

GIULIA GARBI
agenzia immobiliare