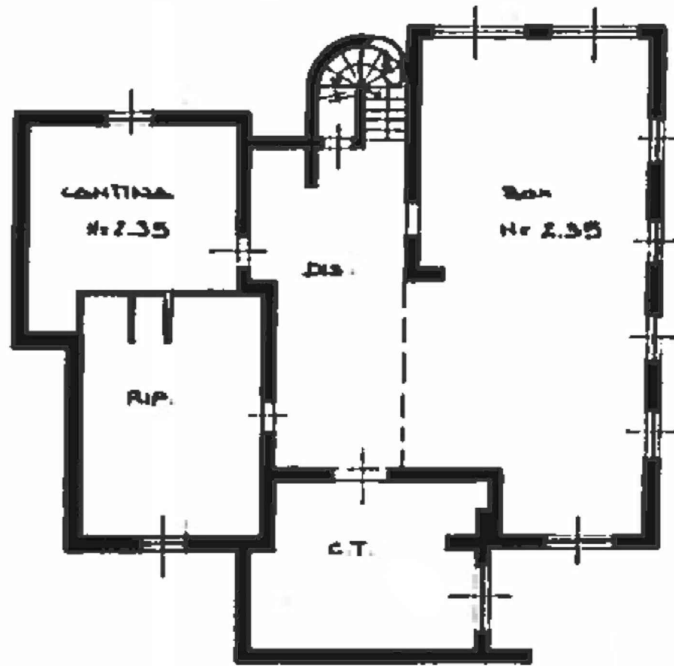
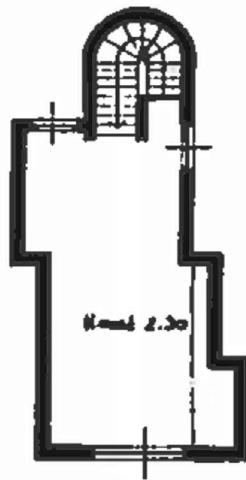


PIANO INTERRATO



PIANO PRIMO



Superficie Lorda

- Piano Terra = 203,25 mq
- Portico (PT) = 33,15 mq
- Cortile (PT) = 670,00 mq
- Piano Primo = 52,70 mq
- Piano Interrato = 228,30 mq

Sup. Commerciale = 380 mq  
(escluso cortile)

Scala 1:200

COMUNE DI BRESCIA

VILLAGGIO SERENO - Traversa XVI

GIULIA  GARBI  
agenzia immobiliare