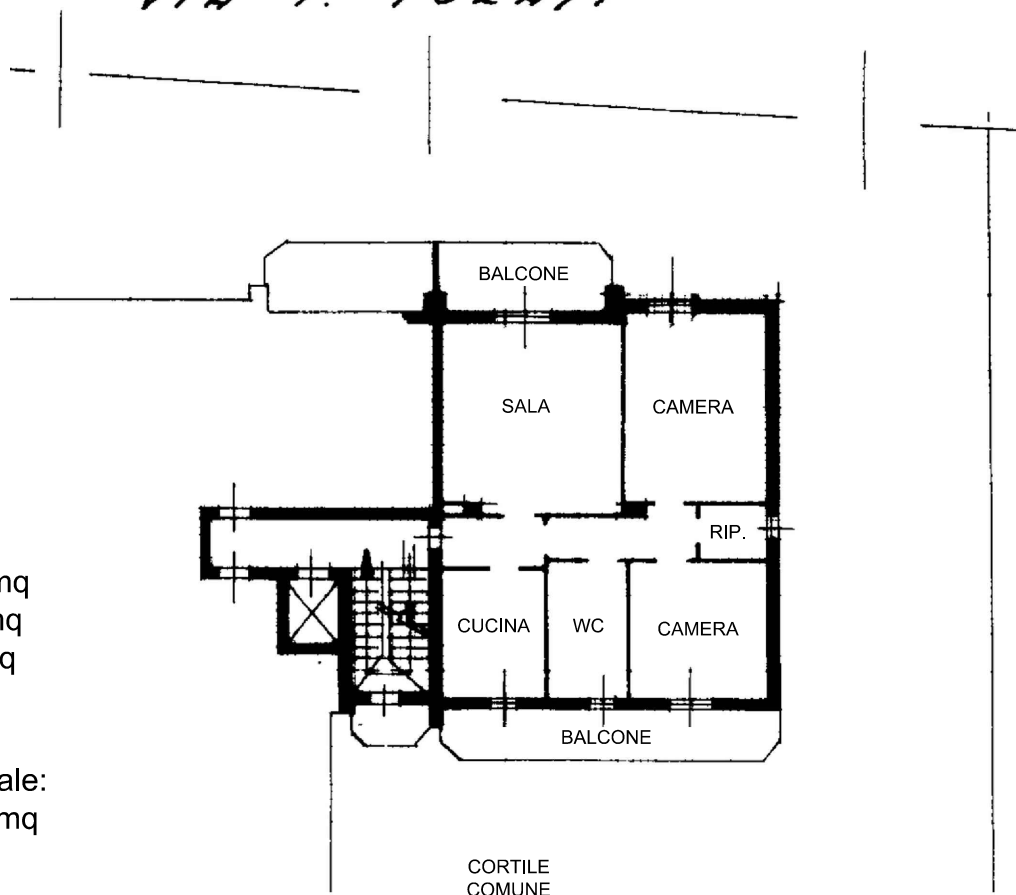


PIANO TERZO
H = 300

VIA F. TURATI

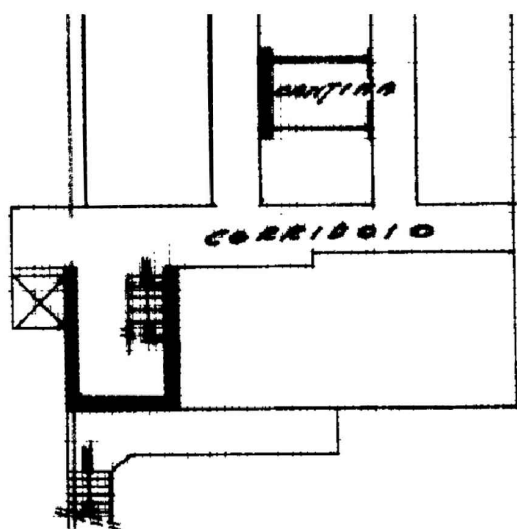


Superficie Lorda:

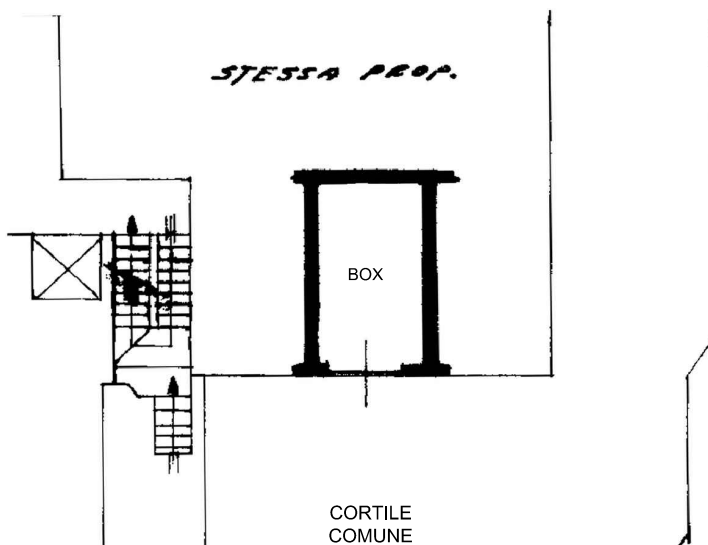
- Alloggio = 97,83 mq
- Balconi = 19,88 mq
- Cantina = 5,57 mq
- Box = 19,90 mq

Superficie Commerciale:
TOT Alloggio = 104 mq

PIANO CANTINATO
H = 250



PIANO TERRENO
H = 280



Scala 1:200

COMUNE DI VIMODRONE

VIA TURATI

GIULIA  GARBI
agenzia immobiliare