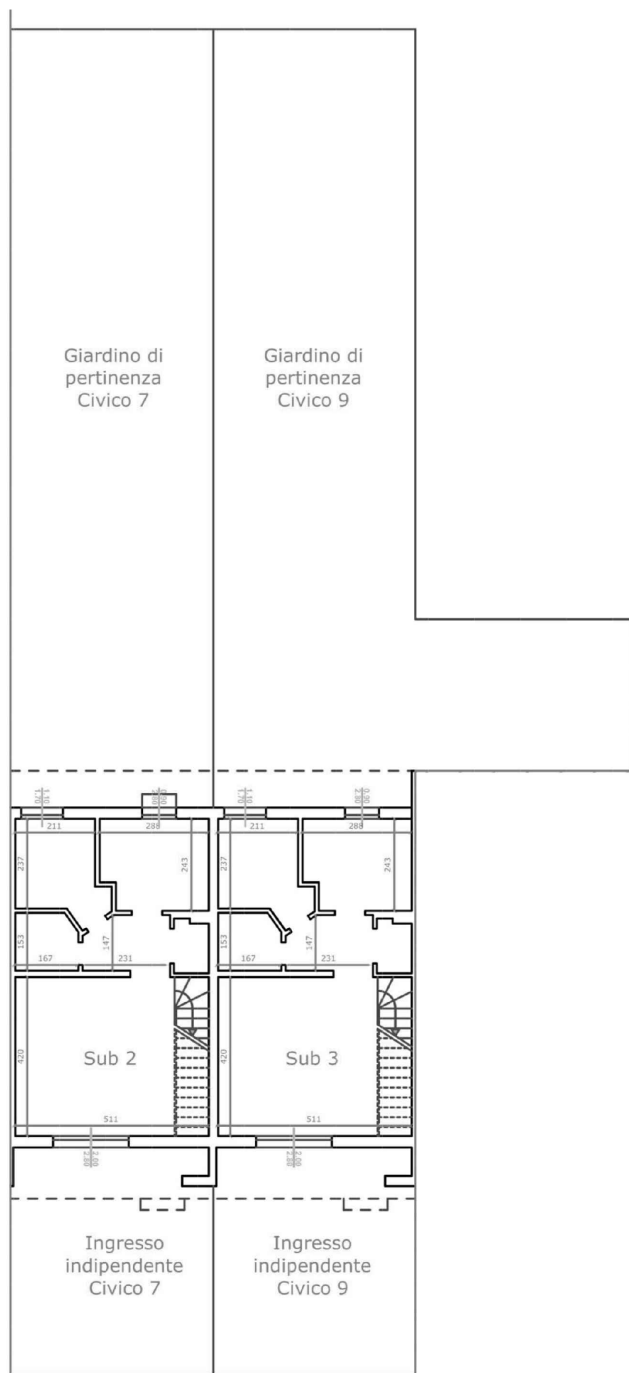
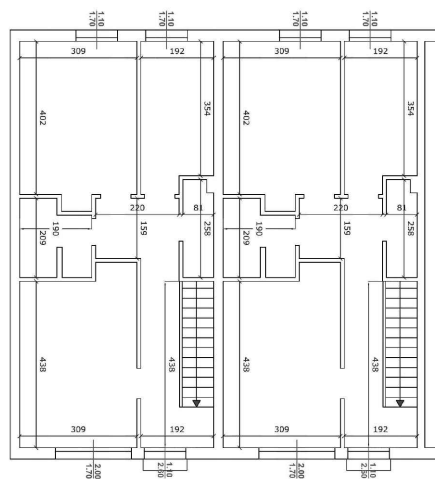


PIANO TERRA



PIANO PRIMO



Via XIII Traversa n. 7 e n. 9

Superficie Lorda sub.2 :

- Piano Terra = 47,85 mq
- Giardino (PT) = 142,00 mq
- Piano Primo = 62,15 mq

Superficie Lorda sub.3 :

- Piano Terra = 47,85 mq
- Giardino (PT) = 164,50 mq
- Piano Primo = 62,15 mq

Scala 1:200

COMUNE DI MILANO MARITTIMA

TRAVERSA XIII

GIULIA  GARBI
agenzia immobiliare