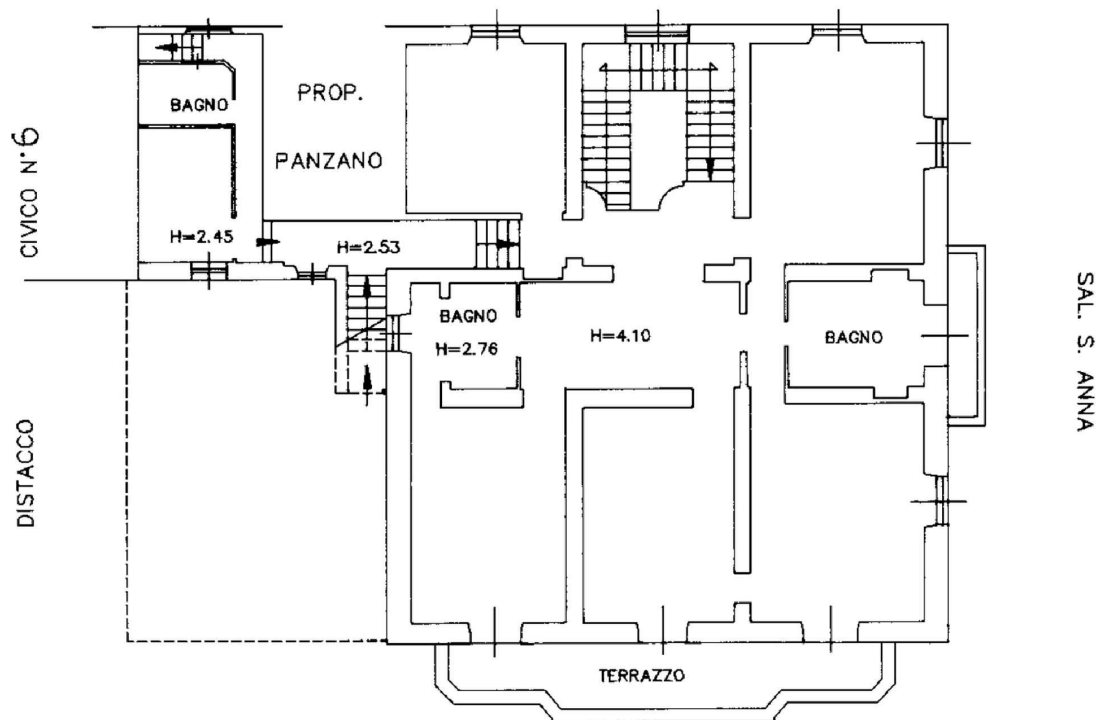


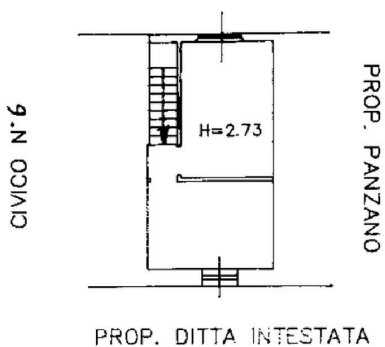
PIANO PRIMO

SAL. S. ANNA



PIANO SECONDO

SAL. S. ANNA



Superficie Lorda:

- Piano Seminterrato = 192,70 mq
- Piano Terra = 270,30 mq
- Giardino (P00) = 89,25 mq
- Terrazzo (P00) = 61,10 mq
- Piano Primo = 270,49 mq
- Terrazzi (P01) = 26,84 mq
- Piano Secondo = 22,20 mq

Sup. Commerciale TOT = 600 mq

Scala 1:200

COMUNE DI GENOVA

SALITA SUPERIORE S. ANNA

GIULIA  GARBI
agenzia immobiliare