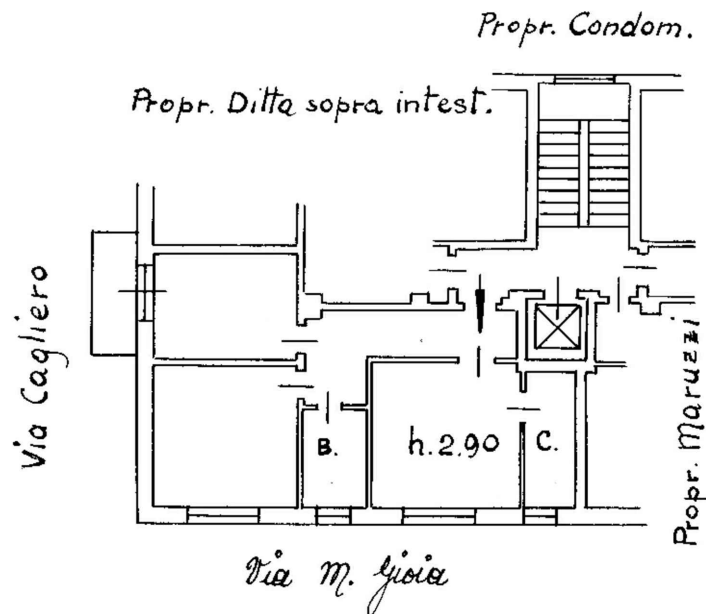
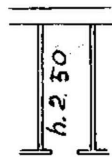


Piano 3^e



Cantina



Superficie Lorda:

- Alloggio = 74,75 mq
- Balcone = 3,85 mq
- Cantina = 5,80 mq

Sup. Commerciale TOT = 78 mq

Scala 1:200

COMUNE DI MILANO

VIA MELCHIORRE GIOIA

GIULIA  GARBI
agenzia immobiliare