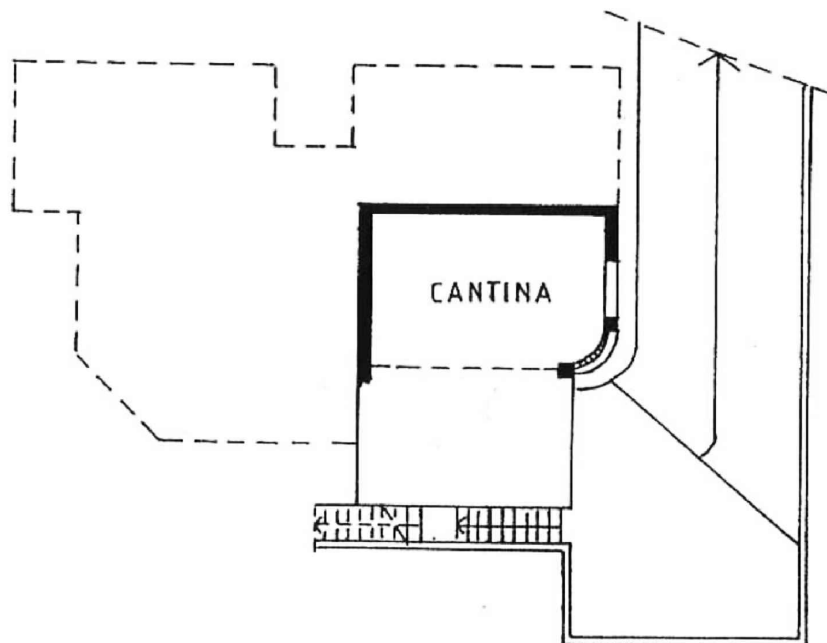
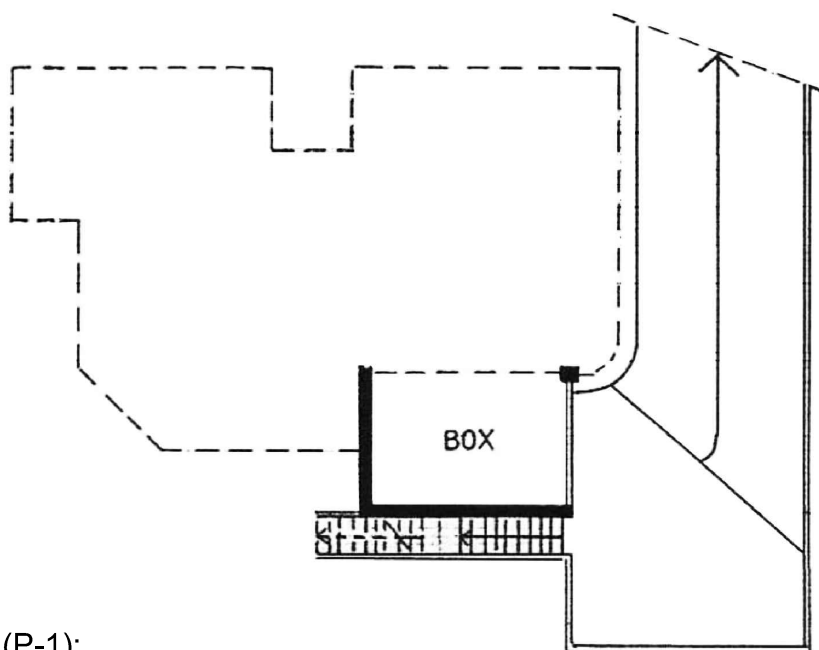


PIANO INTERRATO (H=250)



PIANO INTERRATO (H=250)



Superficie Lorda (P-1):

- Cantina = 29,20 mq
- Box = 21,40 mq

Sup. Commerciale Villa = 235 mq

Scala 1:200

SANT'ANGELO LODIGIANO

VIA DEI GAROFANI

GIULIA  GARBI
agenzia immobiliare