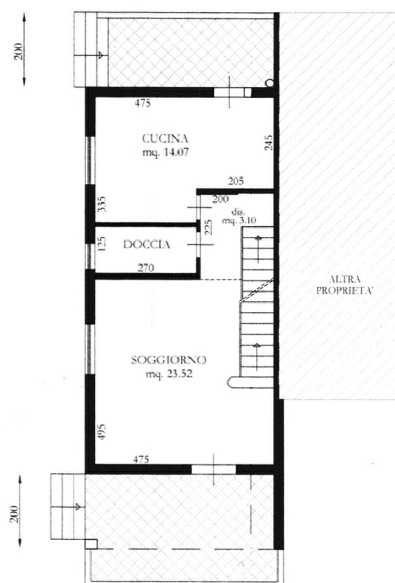
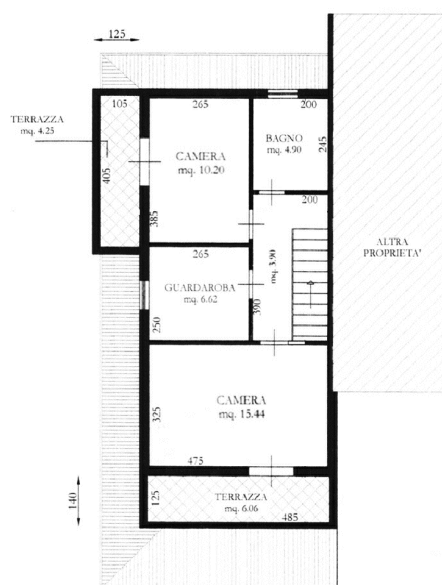


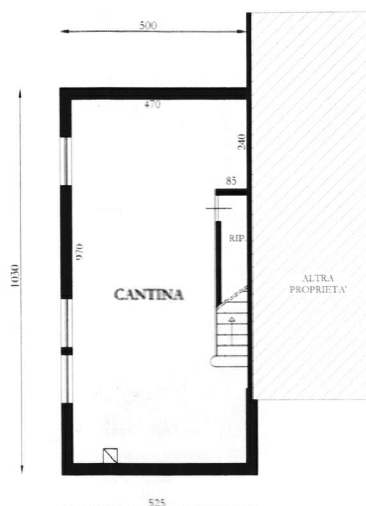
PIANTA PIANO TERRA/RIALZATO



PIANTA PIANO PRIMO



PIANTA PIANO SEMINTERRATO



Superficie Lorda:

Tot Alloggio = 156,68 mq

Logge (PT) = 25,80 mq

Terrazze (P1) = 12,57 mq

Superficie Commerciale = 149 mq

Scala 1:200

MARINA DI PIETRASANTA

VIA ALBERTI

GIULIA  GARBI
agenzia immobiliare