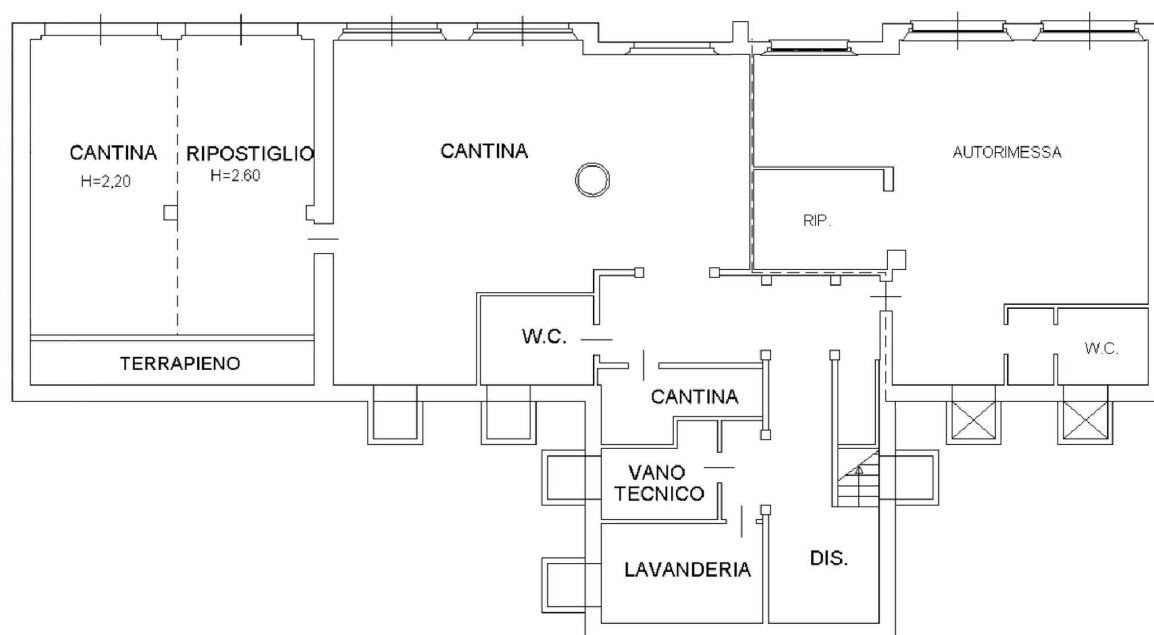


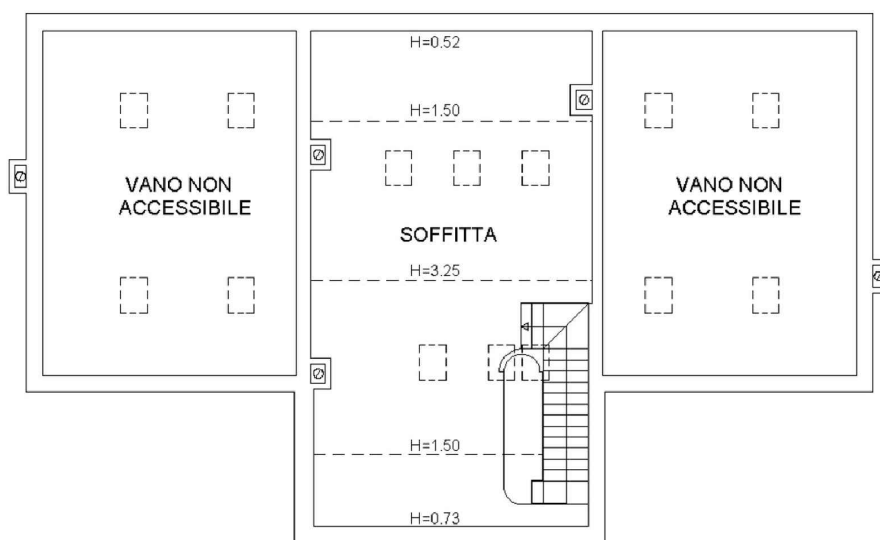
PIANTA PIANO SEMINTERRATO

H=2.55



PIANTA PIANO PRIMO

(SOTTOTETTO)



Superficie Lorda:

- Piano Semint. = 255,50 mq
- Autorimessa (P-1) = 83,65 mq
- Piano Terra = 227,05 mq
- Logge (PT) = 52,20 mq
- Piano Primo = 114,70 mq
- Giardino (PT) = 5.465,00 mq

Sup. Commerciale Villa = 429 mq

Scala 1:200

COMUNE DI SALUDECIO

VIA LEVATA

GIULIA GARBI
agenzia immobiliare